



Warm Weather Matting

Scraper, WaterHog® and Carpeted Logo Mats



CALL 1-800-565-0606 TO ORDER!

106 Burbridge Ave., Dartmouth, NS B3B 0G7
Email sales@cabotss.com Web www.cabotss.com

Offers expire May 31, 2023.

Prices and availability subject to change without notice. FOB Cabot Shipping Supplies. WG 23-05-02

SuperScrape™ Impressions

#3559

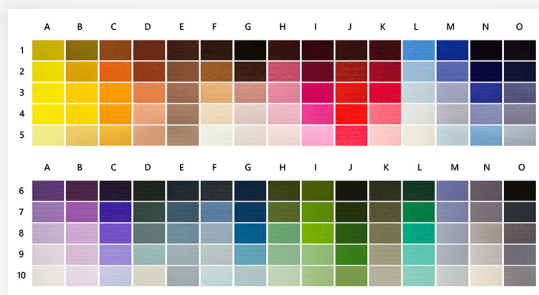
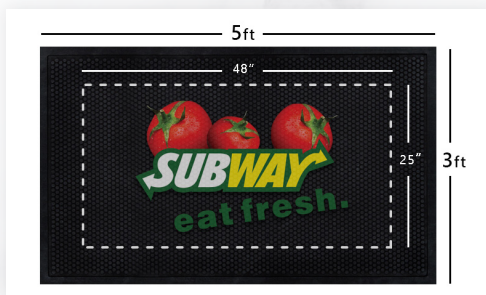


- **Clean** - Surface cleats effectively remove and trap dirt and sand below shoe level to prevent tracking
- **Safe** - Certified high-traction by the National Floor Safety Institute (NFSI)
- **Easy to Clean** - Lightweight flexible design ensures easy handling and cleaning (shake off soil and hose off); can be commercially laundered
- **Features 3/16" thick nitrile rubber with circular surface cleats**

SIZES

- 2.5' x 3'
- 3' x 4'
- 3' x 5'
- 3' x 10'
- 4' x 6'
- 4' x 8'
- 6' x 6'
- 6' x 8'

Sizes are approximate.



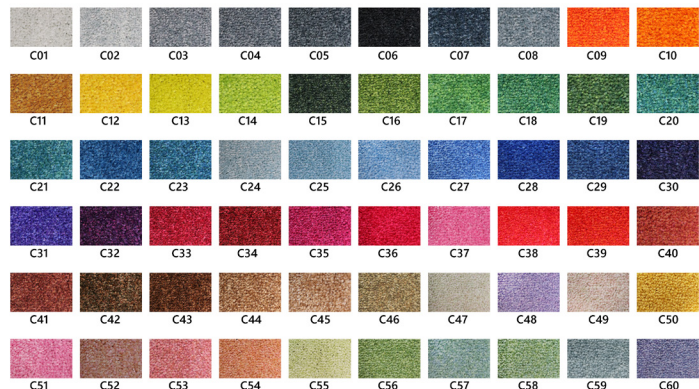
Visit mamatting.com for imprint area and other design specifications.

ColorStar® Impressions

#60



- **Photographic-Quality Printing** - Logos and designs are digitally printed at 76 dpi (dots per inch), making fine details, shading, and 3-D images achievable
- **Eco-Friendly** - PET (polyethylene terephthalate) carpet surface contains 100% post-consumer recycled content reclaimed from plastic bottles
- **Fade Resistant** - PET yarn has excellent color-fastness and is resistant to fading from repeated washing/cleaning
- **Stain Resistant** - PET yarn is naturally resistant to staining
- **Safe** - Certified high-traction by the National Floor Safety Institute (NFSI)
- 60 standard colors options
- SBR rubber backing (smooth or cleated); also available with nitrile rubber backing
- Available in 10 standard sizes and custom sizes with widths of 3', 4', 5', and 6' and lengths up to 10'



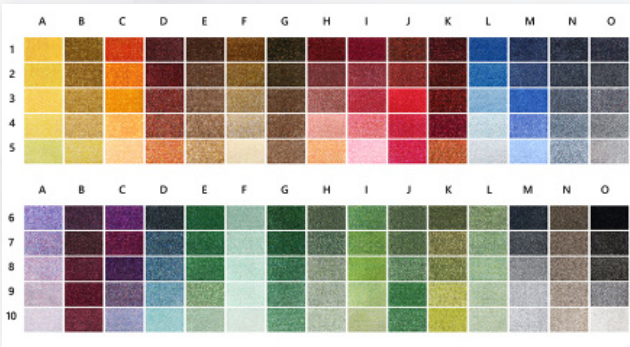
SIZES

- 2' x 3'
- 3' x 4'
- 3' x 5'
- 3' x 10'
- 4' x 6'
- 4' x 8'
- 5' x 8'
- 5' x 10'
- 6' x 10'
- 6' x 12'

Sizes are approximate.

ColorStar® Impressions HD

#973



- **Photographic-Quality Print** – Logos and designs are digitally printed at 76 dpi on 32-ounce per square yard carpet, making fine details, shading, and 3D images achievable
- **Eco-Friendly** – PET (polyethylene terephthalate) carpet surface contains 100% recycled content reclaimed from plastic
- **Fade Resistant** – PET yarn has excellent color-fastness and is resistant to fading from repeated washing/cleaning
- **Stain Resistant** – PET yarn is naturally resistant to staining
- **Safe** - Certified high-traction by the National Floor Safety Institute (NFSI)
- 150 standard color options
- Available with choice of SBR (48 mil) or nitrile rubber (52 mil, 65 mil, 90 mil) backing; commercially launderable (when backed with nitrile rubber)
- Available in 10 standard sizes and custom sizes with widths of 3', 4', 5', and 6' and lengths up to 10'



SIZES

2' x 3'	4' x 6'	6' x 10'
3' x 4'	4' x 8'	6' x 12'
3' x 5'	5' x 8'	
3' x 10'	5' x 10'	

Sizes are approximate.

ColorStar® Impressions HD Custom Shape

#970



- **Photographic-Quality Print** – Logos and designs are digitally printed at 76 dpi on 32-ounce per square yard carpet, making fine details, shading, and 3D images achievable
- **Eco-Friendly** – PET (polyethylene terephthalate) carpet surface contains 100% recycled content reclaimed from plastic
- **Fade & Stain Resistant** – PET yarn has excellent color-fastness and is resistant to staining and fading from repeated washing/cleaning
- **Safe** - Certified high-traction by the National Floor Safety Institute (NFSI)
- 150 standard color options
- Commercially launderable (although please note that certain shapes may not be suitable for laundering)
- Custom shape mats are available in sizes up to 6' wide and 23' long

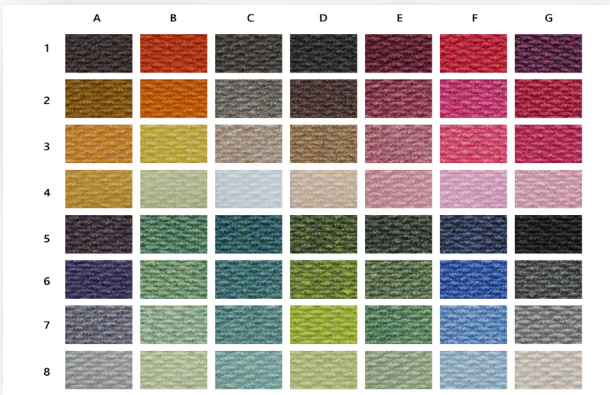


Berber Impressions HD®

#2383



- **Durable** – The tight weave of Berber makes it durable enough to withstand heavy foot traffic while scrapping dirt and moisture from shoes to minimize tracking
- **High Definition** – The Berber fabric features a smooth surface that allows for a crisp printing definition
- **Eco-Friendly** – These mats are made with PET (polyethylene terephthalate), a type of polyester yarn that features 80% recycled content reclaimed from plastic drink bottles
- **Attractive** – Loop pile “berber” construction features a hobnail design for an upscale look
- **Safe** – Durable rubber backing helps keep the mat in place to minimize slipping hazards
- 56 standard color options; choice of smooth or universal cleated rubber backing



SIZES

2' x 3' 5' x 10'
 3' x 4' 6' x 10'
 3' x 5' 6' x 12'
 3' x 10'
 4' x 6'
 4' x 8'
 5' x 8'

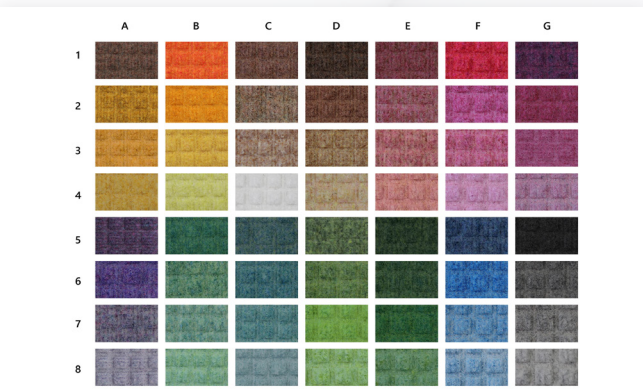
Sizes are approximate.

WaterHog Impressions HD®

#2381 (classic), 2380 (fashion)



- **Clean & Dry** – Bi-level surface effectively scrapes dirt and moisture from shoes, trapping it beneath shoe level to prevent tracking; water dam border holds moisture keeping it off your floors (WaterHog mats can hold up to 1.5 gallons of water per square yard)
- **Durable** – Reinforced rubber nubs prevent pile from crushing and extend the performance life of the mat
- **Safe** – Beveled edges provide a safe transition from floor to mat; certified high-traction by the National Floor Safety Institute (NFSI)
- 56 standard color options
- Features 65-mil nitrile rubber backing (smooth or universal cleated) with choice of classic rubber border or fashion fabric border



SIZES

2' x 3' 4' x 6'
 3' x 4' 4' x 8'
 3' x 5' 6' x 8'
 3' x 10' 6' x 10'
 3' x 12' 6' x 12'
 3' x 16' 6' x 16'
 3' x 20' 6' x 20'

Sizes are approximate.



WaterHog® Inlay

Original #234 (classic), 235 (fashion)



- **Clean & Dry** - Bi-level surface effectively scrapes dirt and moisture from shoes, trapping it beneath shoe level to prevent tracking; water dam border holds moisture keeping it off your floors (WaterHog mats can hold up to 1.5 gallons of water per square yard)
- **Durable & Fade Resistant** - Reinforced rubber nubs prevent pile from crushing and extend the performance life of the mat; solution-dyed fabric is fade-resistant
- **Safe** - Beveled edges provide a safe transition from floor to mat; certified high-traction by the National Floor Safety Institute (NFSI)
- **Eco-Friendly** - Rubber backing contains 20% post-consumer recycled rubber from car tires
- 19 color options
- SBR rubber backing (smooth or universal cleated) with choice of classic rubber border or fashion fabric border



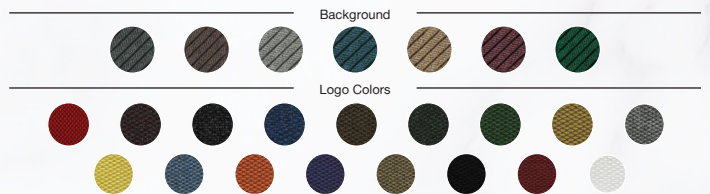
Available in various size options from 2' x 3' to 6' x 20'

WaterHog® Eco Elite Roll Goods Inlay

#2268



- **Clean & Dry** - Bi-level surface effectively scrapes dirt and moisture from shoes, trapping it beneath shoe level to prevent tracking; water dam border holds moisture keeping it off your floors (WaterHog mats can hold up to 1.5 gallons of water per square yard)
- **Durable & Fade Resistant** - Reinforced rubber nubs prevent pile from crushing and extend the performance life of the mat; solution-dyed fabric is fade-resistant
- **Safe** - Beveled edges provide a safe transition from floor to mat; certified high-traction by the National Floor Safety Institute (NFSI)
- 17 logo colors and 7 background colors to choose from; backed with 78 mil SBR rubber (smooth)
- Available in custom sizes up to 12' x 50'
- Designed to be installed like carpeting or loose-laid like a mat; vinyl nosing available for border (sold separately)



Berber Roll Goods Inlay

#2283



- **Durable** - Heavy 52-ounce solution-dyed fabric is stain resistant and has excellent light fastness; tough enough for outdoor use
- **Attractive** - Loop pile "berber" construction features a hobnail design for an upscale look
- **Safe** - High-performance rubber backing helps hold the mat in place to minimize slipping hazards
- **Easy to Clean** - Polypropylene fabric is naturally resistant to staining and fading
- 17 colors to choose from
- Available in custom sizes up to 12' x 50'
- Designed to be installed like carpeting or loose laid like a mat; available with singed borders or vinyl nosing (sold separately)





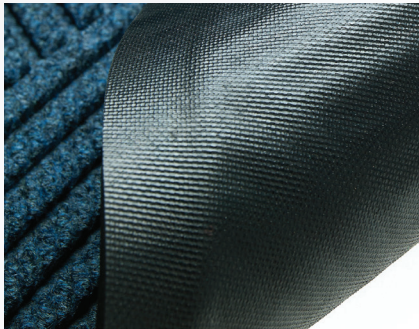
Satisfaction Guaranteed

M+A Matting is where design and function come together, where quality isn't compromised to meet a price point, and where solutions to your maintenance and décor problems come first. We promise our customers an unconditional, 100% satisfaction guarantee for the life of the product.

Quick Mat Information

Selecting a Backing Tread

The backing surface of your mat should be chosen based on the type of flooring the mat will be placed on.



Smooth Backing

Recommended for hard floor surfaces



Full Cleated Backing

Recommended for carpeted floors



Universal Cleated Backing

A "universal" backing for use on hard or carpeted floors

Mat Sizes

Mat sizes are generally listed in feet, but that is a generalization as mats are measured in inches.

As an example, a 2' x 3' WaterHog Inlay mat is made in a mold that measures 23" x 35". But the final mat won't always measure 23" x 35". During the manufacturing process, the rubber is heated so it will permanently bond with the fabric surface. Rubber shrinks and expands in conjunction with temperature and time, so there's an acceptable manufacturing size variance of 3-5%.

Each mat product has different measurements which are available at www.mamattling.ca

www.mamattling.ca

